

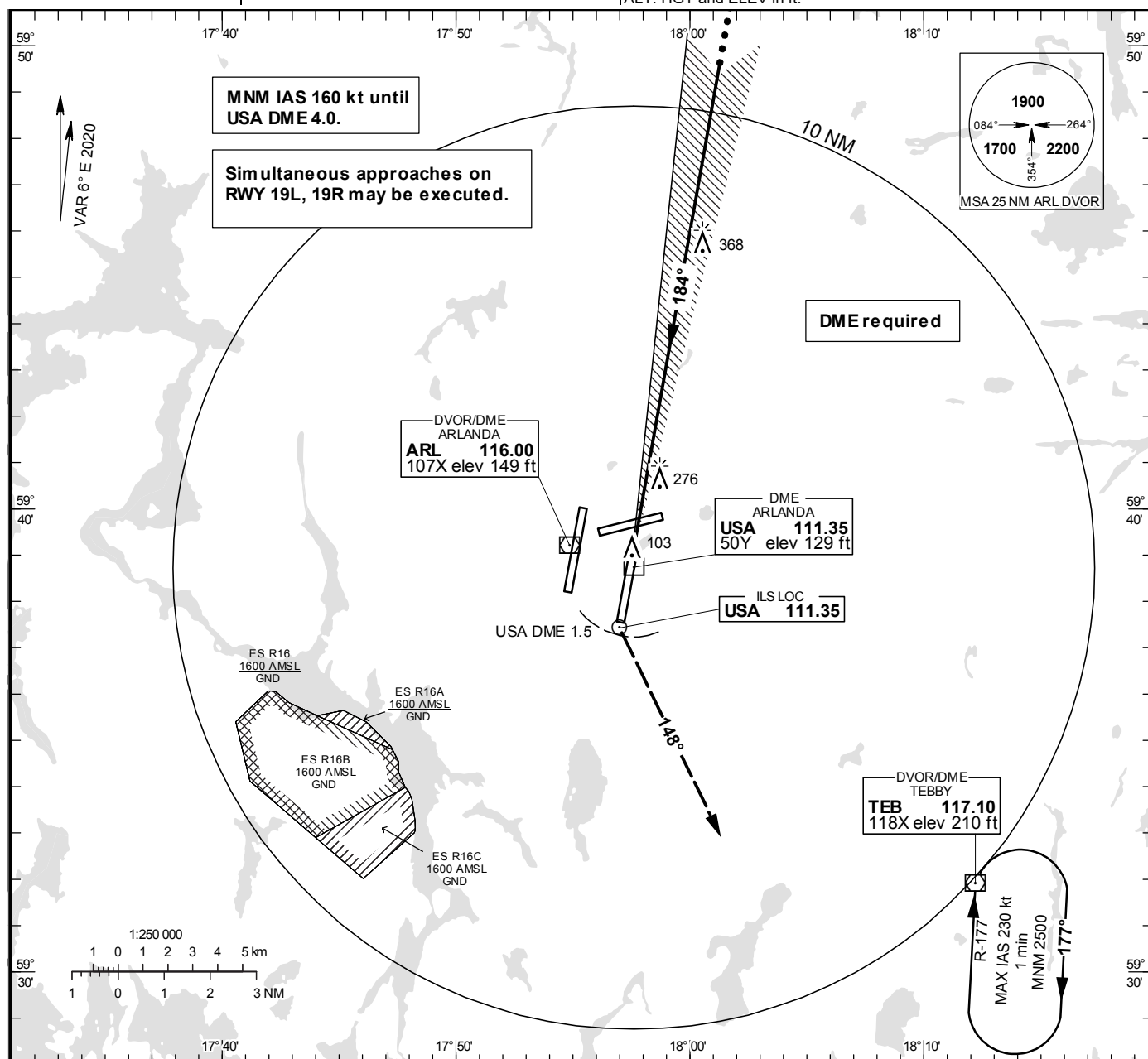
STOCKHOLM/Arlanda

ILS or LOC RWY 19L

ARLANDA TOWER 125.130/
118.505/128.730
ARLANDA ATIS ARR 119.005
STOCKHOLM APPROACH 123.755

THR ELEV 98.9 ft, AD ELEV 138 ft
OCH are related to THR.
Circling OCH are related to AD ELEV.
BRG are MAG
ALT, HGT and ELEV in ft.

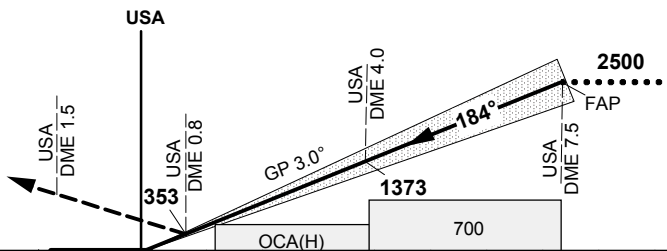
INSTRUMENT
APPROACH
CHART – ICAO



TA 5000 ft AMSL RDH 50.9 ft Special Com Failure procedures see ESSA AD 2.22 *Timing not authorized for defining the MAPt

OM replaced by USA DME 4.0
MM replaced by USA DME 0.8

CLIMB STRAIGHT AHEAD.
AT 600 OR USA DME 1.5
(PAST USA DME), WHICHEVER
IS LATEST,
TURN LEFT TO TRACK 148°
CLIMBING TO 1500,
RADAR VECTORED FOR
A NEW APPROACH.



LOC
FAF at USA DME 7.5
USA DME 4.0 1370
MAPt at USA DME 0.8
Descent grad. 5.2%

| OCA (H) | | | | | | Final approach | LOC Distance FAF-MAPT 6.7 NM* | | | | | | | |
|-------------------------|--------------------|-----------|----------|----------|----------|----------------|-------------------------------|--------|------|------|------|------|------|------|
| Cat of ACFT | | A | B | C | D | DL | DME USA NM | 7 | 6 | 5 | 4 | 3 | 2 | |
| Straight-in Approach | Cat I | 246(147) | 259(160) | 272(173) | 284(185) | 287(188) | ALT | 2328 | 2009 | 1691 | 1373 | 1054 | 736 | |
| | Cat II | 156(57) | 176(77) | 191(92) | 203(104) | 204(105) | GS | kt | 80 | 100 | 120 | 140 | 160 | 180 |
| | LOC | 560 (460) | | | | | Time | min:s | 5:04 | 4:03 | 3:23 | 2:54 | 2:32 | 2:15 |
| | Cat III B Approved | | | | | | Rate of descent | ft/min | 425 | 530 | 635 | 745 | 850 | 955 |

CHANGE: Editorial